

INVISIBLE FOR HOME TECHNOLOGY ARCHITECTS



HTA-48W



Recommended Applications:

- Home Theater / Surround Sound
- Multi-Room Audio Systems
- Added Bass for Foreground Music Systems
- Added Bass for Background Music Systems

Recommended Installations:

Flush mounted in walls or ceilings constructed of wood or steel framing with 13mm (½") or thicker gypsum wallboard. Minimum 64mm (2½") cavity depth required.

Performance:

- 200 watts RMS (per pair)
- 20Hz to 160Hz (see Figure 1)
- 120 watts minimum recommended power (per pair)

On-Site Finish Options:

Finish options include latex paint, flat finish, orange peel texture, light plaster, light wallpaper, light fabric, wood veneer, and other selected approved finishes.

QUAD 8" INVISIBLE SUBWOOFER SYSTEM

The Home Technology Architects quad 8" monaural subwoofer system becomes completely invisible after installation. The loudspeaker has a rigid frame that attaches directly to standard structural framing. The paintable active diaphragm face is bonded to the frame of the speaker panel, creating an active area surrounded by a stable mounting area. Installation instructions are shown on a paper overlay that is to be removed before installation. The overlay can also be used as a cutting template for retrofitting the speakers into existing wallboard.

The speaker may be installed in either the wall or ceiling and on-site finishing options include latex paint, light wallpaper, fabrics and selected texture coats. There is no need for special vellums or other nonstandard wallboard finishing materials.

Advanced finishing methods may be supported using special techniques.

The invisible subwoofer system incorporates two acoustically coupled, high-quality, low profile high-power 203mm (8") cone woofers per panel. The panels work as a pair for monaural subwoofer output providing exceptional bass output. When installed in the recommended back box, the advanced internal materials allow for smooth frequency extension from 20Hz to 160Hz by trading off excursion for surface area to propagate bass waveforms.

For proper registration, each speaker must be installed so that the surface of the **perimeter edge is flush** with the adjoining wallboard. When correctly in place, the surface of the speaker **face panel extends above** the height of the wallboard by 2mm (⅛"). This is done

to allow space for the tape and joint compound needed to blend the panel into the wall. Shims are included to allow for mounting in wallboard thicker than 13mm (½").

These invisible subwoofers offer a powerful advantage over traditional architectural subwoofers because they can be placed wherever they sound best, free of visual concerns that may conflict with architectural features.

To accompany these subwoofers, completely invisible companion speakers are available for a totally invisible audio solution

These speakers are covered by a 5 year manufacturer's warranty.

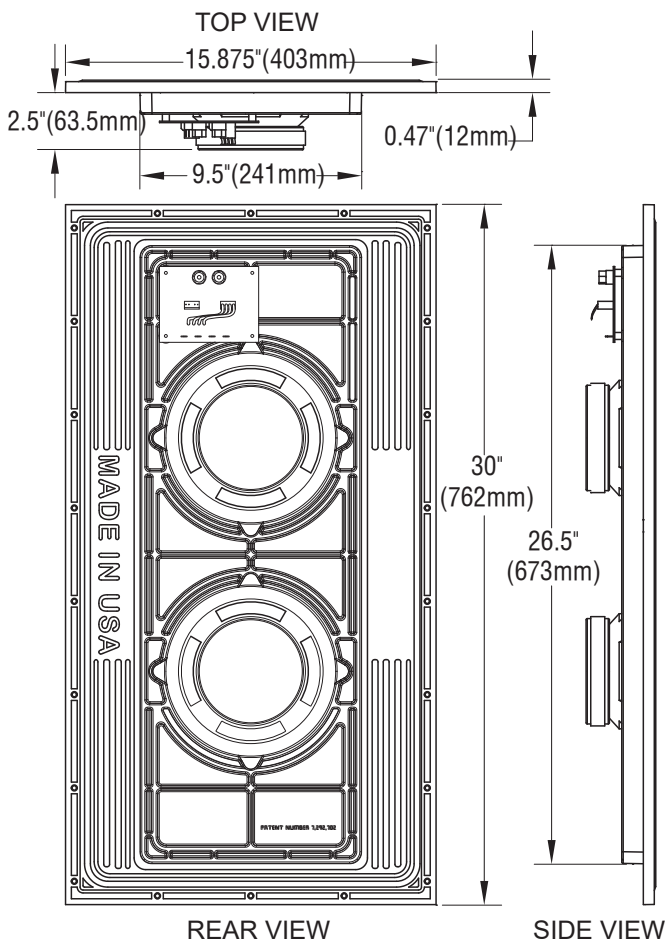
HTA-48W

QUAD 8" INVISIBLE SUBWOOFER SYSTEM

Architectural & Engineering Specifications

The subwoofer shall be an invisible, low frequency flat-panel system, with an operating range from 20Hz to 160Hz. It shall be a two panel system with each panel having a total radiating surface of 2,103 sq. cm (326 sq. in). Each panel shall be driven by two 203mm (8") woofers with a nominal impedance of 16Ω per panel and a power handling of 100 watts RMS according to EIA standard RS-426-A. The panels may be wired in parallel with an impedance of 4Ω.

The subwoofer shall fit into walls or ceilings with standard wood or steel stud construction and a minimum 64mm (2½") depth cavity. The subwoofer shall mount directly to the structural framing and have the capability of seamlessly adjoining 13mm (½") or thicker gypsum wallboard. The minimum distance between framing members shall be 241mm (9½"). Face panel finishing methods shall be consistent with normal gypsum wallboard finishing techniques and may include latex paint, light wallpaper, light fabric, wood veneer, and other selected approved finishes. The loudspeaker shall carry a 5 year manufacturer's warranty.



Product Specifications

Frequency Response:

20Hz to 160Hz (see Figure 1)

Power Capacity:

200 watts RMS (per pair)

120 watts minimum recommended power (per pair)

Sensitivity:

86 dB (1 watt / 1 meter)

Driver Components:

Low-frequency: Two 38mm (1½") voice coil 203mm (8") woofers with 567 gr (20 oz.) ceramic magnet

System Impedance:

The impedance may be changed from 4Ω (in parallel) to 16Ω (in series) via a jumper on the back of each panel.

Polar Dispersion:

170 degrees vertical and horizontal

Crossover Frequency:

Requires amplifier with low pass filter. 50Hz with 18 dB slope recommended

Dimensions:

Width: 403mm (15⅞")

Height: 762mm (30")

Mounting Depth: 64mm (2½")

Product Weight:

9.1 kg (20 lbs.) each panel

Shipping Weight:

20.8 kg (46 lbs.) per pair

Included Accessories:

Mounting shims
Mounting screws
Terminal wrench

Designing Invisible Sound Systems

Invisible Sound Systems require the appropriate Backbox, Cable and Amplifier with Digital Sound Processing (DSP).
Contact us for free consultation and system design: www.genesis-hta.eu

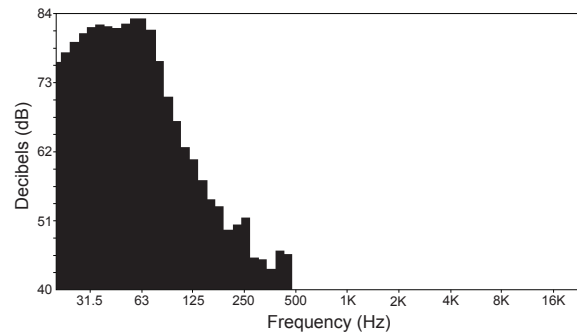


Figure 1: On-axis frequency response in standard stud wall with four coats of latex paint applied to the speaker face panel.



Sold and Installed by [Home Technology Architects](#) exclusively.

Definition: A Home Technology Architect is an engineering company with the expertise and know-how to deliver home technology solutions that are simple, reliable and beautiful.

HOME TECHNOLOGY ARCHITECTS